



# Oakridge News

**Our membership drive is under way!**  
See page 2 for details.

Vol. 15, No. 14

Published by the Oakridge Neighborhood Association

www.oakridgena.com

July 2007

## Oakridge's top priorities require your input!

**By Mike Dollar**  
**ONA President**

On June 14<sup>th</sup> the City of Garland Oakridge Neighborhood Program Team presented options for addressing the top priorities previously determined by our residents. Those priorities are:

- Reducing the number of parked cars on streets
- Replacing street lights with a design similar to the original
- Updating the landscaping at neighborhood entrances and around screening walls
- Attracting and keeping quality retail and restaurants
- Developing and implementing neighborhood marketing strategies

The City has done some excellent preliminary work towards addressing these priori-

ties, but there are many details still necessary, and the city's Program Team has requested our input on an action plan. This plan will be reviewed by both city and neighborhood representatives. The final responsibility for implementing the plan will be shared among the residents, neighborhood organizations, the City of Garland, and community resources.

In order to contribute, I would like to create an ad hoc committee of ONA members for the purpose of evaluating and proposing schedules, action items, and deliverables for use within the collaborative framework mentioned above. The scope of the committee's task may require one to three meetings over a four to eight week period. The outcome would be a report with recommendations for the ONA Board to consider and present to the

City of Garland Oakridge Neighborhood Program Team and the Garland City Council to review.

This neighborhood has always been an inspiration in its volunteerism. If you have expertise (i.e. strategy development, budgeting, financial planning, contracts, contractor negotiations, fund-raising, legal, grant-writing, marketing, landscaping, electrical, business development, etc.) that might apply to one or more of the priority areas listed above, and would like to contribute to this project as a committee member, please email me at [onapresident@aol.com](mailto:onapresident@aol.com).

As always, thank you for your help in keeping this neighborhood a special place for all seasons.

I hope you had a great 4<sup>th</sup> of July holiday, and are having a great summer.

### I•N•S•I•D•E *this issue*

The Oakridge Neighborhood Association's Membership Drive is under way. **Page 2**

The Schadeggs celebrate their 50th wedding anniversary! **Page 2**

August gardening tips from Bruce Miller Nursery. **Page 3**

Teens accused of burglarizing Oakridge Country Club. **Page 4**

Watch out for the chiggers and red palm mites! **Page 5**

Low fat summer recipe: shrimp and mango salad. **Page 7**

## Water Stage Explanation

**By Rick Williams**  
**District 7, City Council**

One of the good things about being elected to City Council is the ability to get really thorough answers to your questions. During June, I had numerous District 7 residents ask me, "Why is Garland still under Stage 3 water restrictions when Lake Lavon is full and even flowing over the spill way?" Good question and other council members had been getting the same question. The answer is as follows:

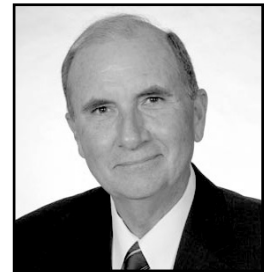
It is true that Garland gets its water from Lake Lavon, but Lake Lavon gets its water from rain/run-off AND from Lake Jim Chapman (also called Cooper Lake) and Lake Texoma. Water is pumped from these two lakes into Lake Lavon, so water in Lake Lavon is also dependent on the water levels in Jim Chapman and Texoma lakes. If those two lakes are not full, then Lake Lavon

**Rick Williams**

**District 7**

**214 535-2648**

[rickwilli@gmail.com](mailto:rickwilli@gmail.com)



is not at "full capacity" to provide water to the North Texas Municipal Water District (NTMWD) member cities like Garland.

Despite the rains this spring, Jim Chapman (Cooper) Lake remained low during much of 2007. Consequently, the NTMWD service area, which includes Garland, remained under a Stage 3 restriction. Even as recently as June 24, 2007, Jim Chapman (Cooper) Lake was 5 feet low (i.e., about 69% full). However, the rains finally brought Chapman/Cooper almost to the top, and in early July, NTMWD removed all

*continued on page 6*

# ONA membership drive is underway!

**By Cecile Labossiere  
Membership Director**

If you haven't noticed yet – the ONA annual membership drive is taking place over the next 90 days. During the months of June, July and August, the ONA membership volunteers mail out letters and dues applications informing everyone of the importance of the ONA and describing our mission statement that focuses on maintaining the beauty and neighborliness that defines Oakridge.

For our members that have mailed in their annual dues, I want to say THANK YOU for renewing your membership and providing us with the financial support and positive reinforcement to continue our work in the neighborhood. For our new members, I want to say WELCOME to the ONA, we appreciate the fact that you took the time to read our letter and make a financial contribution to your neighborhood association!

As with any non-profit voluntary organization, we have to hold an annual fund raising event. Our membership drive coin-

cides with our fiscal calendar (June through May) and we limit our drive to a specific 90 day period. That way we do not have to spend the entire year focused on fundraising. During the balance of the year (the months we are not in membership drive) we continue to draw new members through our Welcome Committee for new neighbors, general membership meetings and events planned thru our events committee.

Our membership goal this year is 60% participation – 700 members. Our 2nd notices have been mailed during the first week of July to all neighbors that have not joined yet. If you have not renewed yet, please take the time to reconsider and help us achieve our membership goal this year.

And again thanks to everyone that has joined or renewed – we appreciate the support. In next month's newsletter, please look for the membership updates, information on the volunteer organizational meeting time and place and updates on request for email news and newsletters.

## About the ONA

*Oakridge News* is a publication of the Oakridge Neighborhood Association.

### ONA OFFICERS

- President .....Mike Dollar
- Vice President .....Keith Engler
- Secretary .....Karen Engler
- Treasurer .....Joann Williams

### DISTRICT DIRECTORS

- District 1 .....Joe & Beth Fagan
- District 2 .....Jim Norris
- District 3 .....Sandra Stevens
- District 4 .....Joan & Dan Nichols
- District 5 .....Tony & Tillie Battaglia
- District 6 .....Phil Hanas
- District 7 .....David & Sharon Parrish

### COMMITTEES

- Membership .....Cecile LaBossiere
- Communication ....Ben Moss & Keith Engler
- Environmental .....Don Pattie
- CPS .....Eric Morris & Carol Garrison
- Special Events .....S. Rutherford-Franks
- Welcome Wagon .....Cecile LaBossiere

## Schadegg 50th wedding anniversary

Oakridge residents, Don and Janice Schadegg, who were married June 8, 1957 in Des Moines, Iowa, recently celebrated their 50th Wedding Anniversary. In honor of the occasion their son and daughter-in-law, Rob and Cris Schadegg, hosted a Dinner Dance at The Oakridge Country Club. Following their celebration, which was attended by numerous friends, the couple



departed on a trip to Hawaii. Their trip included several days in Honolulu and an inter-island cruise where they renewed their wedding vows.

The Schadeggs are back home now, but they have many new experiences, memories and pictures to add to the story of their lives together... past, present and future.

Congratulations Don and Janice!

Quality Work & Great Rates!

**MR. FIX-IT-ALL**  
WE FIX <sup>ALMOST</sup> ANYTHING

972-272-3700 FREE ESTIMATES

- ROOFING
- PAINTING
- HONEY-DO-LISTS
- PLUMBING
- FENCE REPAIR
- GENERAL REPAIRS
- REMODELING
- SHEET ROCK
- ELECTRICAL
- BATHROOM TILE & CAULKING

# Attention Oakridge News Contributors:

**Oakridge News has a new deadline for contributors' articles! All articles are now due on the last day of the month. Thank you!**



## August gardening tips

**By Bruce Miller**  
[www.bruce millernursery.com](http://www.bruce millernursery.com)

Traditionally August is the hottest month of the year for North Texas with plenty of 100 degree days. Sometimes it seems as if September will never show up. It takes a very dedicated gardener and plants with fortitude to survive a Texas August.

Speaking of plants with fortitude, this would be a good time to bring up the subject of perennials again. In previous months this site we have expounded on the merits of perennials. Now, you hear a lot of rhetoric about "native" Texas plants and perennials.

Well, some Texas natives may come from way out in West Texas or way down in East Texas, completely diverse cultures, soil, rainfall and climate. The plant you want in your garden is the one that is adaptable and happy no matter if it is native to Texas, China, Japan, Europe, Iran, Afghanistan or whatever.

Plant fall petunias, salvias, Mexican petunias, asters, cosmos and zinnias if

you can find them. Most growers are out by now and are concentrating on chrysanthemums and pansies.

Plant trees, shrubs, and other hearty evergreens. Keep them well watered. Also, fall vegetables, English peas, broccoli, cabbage, cucumbers and squash.

- Fertilize – roses, lawn grasses, trees and shrubs for the last time this season.
- Treat for grub worms.
- Prune – roses.
- Clean off old seed heads; also old spent blooms, on canna and other summer blooming perennials.
- Watch for our friends the aphid and spider mites as long as weather stays hot.

To read more Bruce Miller columns, visit [www.bruce millernursery.com](http://www.bruce millernursery.com).

Philip Hanas  
**OAKRIDGE PAINT & PAPER**  
*Oakridge Resident Free Estimates*



Day 214 -724 -1912  
Eve. 972- 414 -1912

**PAINTING:** Interior & Exterior  
Refinish Doors & Cabinets  
Repair Drywall & Texture

**WALLPAPER:** Hanging, Removal, Prep

**CARPENTRY:** Repair Soffits & Fascia  
Install new trim, moldings

**TRUST:** Quality work done by  
the owner

## TJB FUNDING

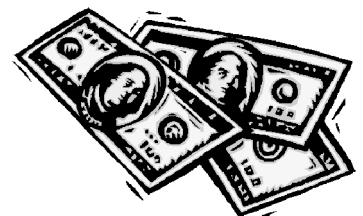
CASH NOW!

Are you receiving payments from a mortgage note, court settlement, or a lottery winning?



Call us today!

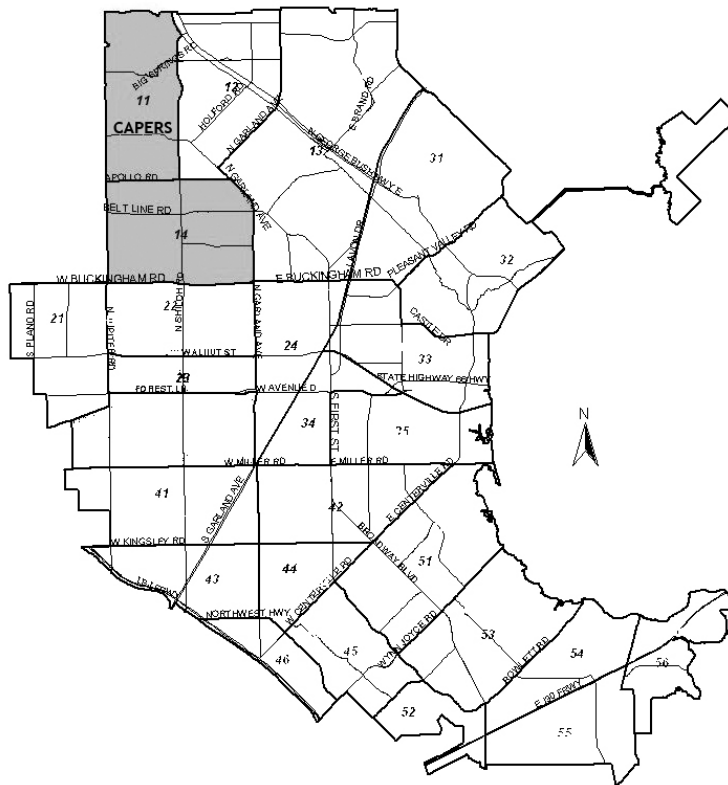
**TJB Funding**  
**214-212-0338**



**10-Year Oakridge Resident**

Oakridge Neighborhood Policing Area

Officer Capers



as of July 2007

NPO Lieutenants:  
 Lt. G. Gregory  
 Lt. J. Bryan

## Teens accused of burglarizing Oakridge Country Club

Four teenagers have been arrested on accusations of vandalizing the Oak Ridge Country Club and spraying anti-Semitic slurs on a nearby home, Garland police said Tuesday.

The burglary occurred the morning of May 24, police said. The teens are accused of breaking in and damaging the club's cart barn, carts and course, and spraying slurs on a home and car near the club.

The club estimated about \$20,000 in damages, police said. The teens were being charged with burglary of a building.

### Pet Pals Plus Pet Sitting & Personal Assistance Services

In your home Pet Sitting  
 Reliable – Caring – Mature Adults

I treat your pets like they're my own- with Tender Loving Care.



Personal Services:  
 Misc. Errands \* Shopping \* Organizing And More...



No job is too small!

For Reasonable Rates call:  
 214-394-6349



References available

## Handi Gals

*Tired of those minor household jobs that never get done?*

- **Plumbing:** faucets, disposal, toilets, sinks
- **Electrical:** ceiling fans, light fixtures, outlets
- **Security:** door locks or window locks

*Honest estimates, dependable service, and reasonable prices*

Contact **Cecile**, an Oakridge resident since 1995  
 972-896-9413 or 972-414-8057  
 e-mail: [cmleks@verizon.net](mailto:cmleks@verizon.net)

**NO JOB IS TOO SMALL**

## Pest Check

**Kimberly Schofield**  
**Program Specialist-Urban IPM**  
**Texas A&M University**

### Watch Out for the Chiggers

As the summer air warms, the chiggers are beginning to become more numerous. There are two species of chiggers that affect humans and other animals. One species lives in fields, grass and weed areas, while the other species likes moist habitats such as in swamps, rotten logs and stumps.

Chiggers develop in four life stages: egg, larva, nymph and adult. Eggs hatch into six-legged larvae. The larvae climb up onto vegetation, so they can crawl onto a passing host. This is the only stage that feeds on humans and animals. Chigger larvae prefer to bite people in places where clothing fits tightly over the skin such as around the waistline, under socks, or where the skin is thin or creased such as around the ankles or the back of knees. Chigger larvae insert their mouthparts into a skin pore or hair follicle, and then inject a digestive fluid to dissolve skin cells. This results in itchy, reddish welts on the skin. It is the dissolved skin cells, not blood that chiggers ingest as food. The tiny larval chigger mites do not present a real medical health concern, but they can make outdoor events an unpleasant experience.

After feeding, the larvae drop off of the host to molt into eight-legged nymphs which then molt into adults. Chigger nymphs and adults feed on eggs of springtails, isopods, and mosquitoes. Adult chigger mites are about 1/20 inch long, bright red, and have hairy bodies. The adult chiggers will overwinter in protected places and then become active in the spring. Under favorable conditions, most chigger species complete their development from egg to adult in 40 to 70 days.

#### Suggestion for Prevention:

Clear away brush and weeds, mow grass close to the ground, and remove

conditions that may attract small animals that can serve as chigger hosts. This will reduce the amount of chiggers found in your area, since chiggers usually do not survive in areas that are well attended.

Wear tightly woven socks, long pants, long sleeved shirts, and high shoes when entering a potentially chigger infested area. Also tuck pant legs inside boots and button cuffs and collars as tightly as possible to prevent chiggers from climbing inside your clothes.

Avoid sitting on the ground when camping, picnicking, or working outdoors.

Apply repellents such as DEET or permethrin to both the skin and clothing, such as hands, legs, and waistband. Powdered sulphur is another repellent that can be dusted around the opening of your pants, socks, and boots or rubbed on skin such as over legs, arms and waist.

#### Suggestions for Use of Insecticides:

Chiggers sometimes become a problem in home lawns, so chemical control may be desirable. Insecticide sprays may provide some temporary reduction of chiggers and they are effective when applied in areas where chiggers and their animal hosts are living and/or roaming. Insecticides containing carbaryl, permethrin, cyfluthrin are some suggestions for control. Sprays should be made on grass, shrubs and the soil. Be sure to follow label directions for any insecticides used.

#### Suggestions for Relief After

##### Exposure:

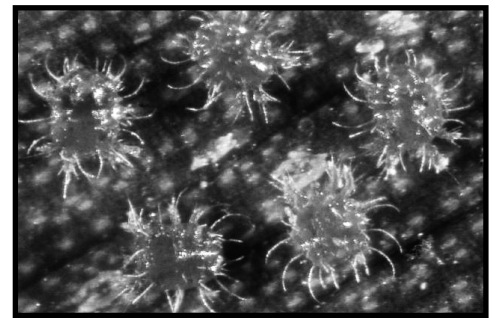
Wash field clothes in hot, soapy water to kill chigger larvae. Take a hot bath or shower and soap repeatedly after chigger exposure. If you bathe quickly after exposure, then you can wash crawling chiggers off your body before they bite.

Apply creams or ointments such as hydrocortisone or calamine lotion to relieve itching temporarily.



**Chigger, *Trombicula* spp.**

Photo by Department of Entomology and Plant Pathology, Auburn University.



**Female Red Palm Mite.**

Photo by R. Duncan.

### Be on the Lookout for the Red Palm Mite

The red palm mite *Raoiella indica* Hirst (Acari: Tenuipalpidae), is a potential pest of coconut palm, areca palm and date palm. However all palms should be monitored, since all hosts have not been identified. Also this mite attacks ginger, banana and heliconias.

The red palm mite is red in color with long white setae (hairs) all over its body. All lifestages are red in color. The female is 0.3mm in length with black patches across its back. The males are smaller than females with a distinctly triangular body. These mites can be distinguished from spider mites since the red palm mite is bright red in color, has long setae, and a flattened body.

These mites will be found feeding in groups of hundreds on the underside of leaves. Their feeding will cause yellowing of leaves and tissue necrosis. Wind currents and transport of infested plants

### Water Stage (continued from page 1)

water restrictions. I asked at a Council work session, what happened to stages 2 and 1 (i.e., we jumped from stage 3 to no restrictions)? Well, it turns out that the NTMWD board meets once per month. The lakes filled so fast due to the rains that we were at Stage 3 in early June (when the NTMWD board met) and by the time the early July board meeting took place, we just skipped over stages 2 and 1 and water restrictions were removed.

On July 3, the Council did amend the Stage 3 restrictions so that it now allows residents to wash their cars during Stage 3 as long as the water is shut off (e.g., with a nozzle) when not being used to clean/rinse the car. Previously, Stage 3 restrictions did not allow car washing at your home, but that was more style than sub-

stance. One local town studied how much water it took to wash a car with a hose shut-off device, and it was only about 5 gallons. So, the no car wash rule was more style than substance. One of these years, I'm sure we'll be in Stage 3 again, but at least we'll be able to wash our cars.

It should be noted that Garland still has some common sense water conservation rules that need to be followed such as no irrigation/sprinklers between 10:00a.m. and 6:00p.m. For complete details, go to [http://www.ci.garland.tx.us/Home/Departments/Utility+Services/Water+Utilities/W100\\_Landing.htm](http://www.ci.garland.tx.us/Home/Departments/Utility+Services/Water+Utilities/W100_Landing.htm)

As always, to represent you, I need to hear your concerns and issues. The best way to do that is via my E-mail address of [rickwilli@gmail.com](mailto:rickwilli@gmail.com).



## U-STOR

*Offering ONA members discounted prices with this coupon*

Three Month Package,  
5x5 unit, \$22.50 Per Month

Special Prices Also On Other Sizes

**U-Stor Self Storage**  
2809 Belt Line Road  
Garland, TX 75044  
972-495-9505



Book your next party or event at Oakridge Country Club!  
Call Margaret Goff at 972-530-8008 x239

### JOIN OAKRIDGE IN TIME FOR SPRING

#### Oakridge Neighborhood Social Membership

Members and their family enjoy full club privileges excluding golf. Includes participation in swimming, tennis, dining and all club events for a full 12 months. This is an Oakridge Only membership and does not include participation with sister clubs.

Initiation Fee: \$500

**Special Promotion:** Sign up by April 1st and receive \$100 food credit in the dining room (excludes alcohol sales).

#### Oakridge Neighborhood Sports Plus Promotion

Members and their family enjoy full club privileges at Oakridge Country Club, Los Rios and The Shores. Membership includes golf access, tennis, swimming, dining and participation in events/tournaments.

**Initiation Fee:** Regularly \$199 - waived if membership is purchased before April 1st, 2007.

**Sports Plus - Single:** \$49.95/month plus tax

**Sports Plus - Family:** \$69.95/month plus tax

Sign up by April 1st, 2007 and receive 4 guest passes for cart and green fees

Pre-Pay for 12 months and receive 1 month's dues free

**Total Promotion Value: \$400**

For more details contact Margaret Goff @ 972-530-8008 x239



# got the urge to shop?

Just visit my Mary Kay® Personal Web Site **anytime**. Find a great **gift**. Get a new **lipstick**. See the latest looks. It's quick. Easy. And it's available 24 hours a day, seven days a week. So check out my **beautiful** Web site at your **convenience**.

Rebecca Chanez  
Independent Beauty Consultant  
[www.marykay.com/rchanez](http://www.marykay.com/rchanez)  
(214)227-4181

MARY KAY®

## Pest Check (continued from page 5)

or leaves are usually the means of dispersion.

Although this mite has not been found in the United States, it has rapidly spread throughout the Caribbean. This makes this mite a potential pest in the subtropical areas of the United States.

*Mention of commercial products is for educational purposes only and does not represent endorsement by Texas Cooperative Extension or The Texas A&M University System. Insecticide label registrations are subject to change, and changes may have occurred since*

*this publication was printed. The pesticide user is always responsible for applying products in accordance with label directions. Always read and carefully follow the instructions on the container label.*

## Low fat summer cooking: shrimp & mango salad

**Fiona Haynes**  
**www.about.com**

Perfect for late spring or summer, this colorful salad makes a great lunch or light supper. The spicy dressing is offset by the sweetness of the mangoes and tomatoes.

### Ingredients:

- 3/4 pound cooked shrimp
- 1 large mango, deseeded, peeled and cubed
- 1/4 cup sliced green onions
- 1 tbsp fish sauce
- 1 tbsp soy or tamari sauce
- Juice of 1 large lime
- 2 tbsp water
- 1 tbsp brown sugar
- 1 tsp minced jalapeno pepper
- 4 cups arugula
- 4 small vine-ripe tomatoes, cut into wedges

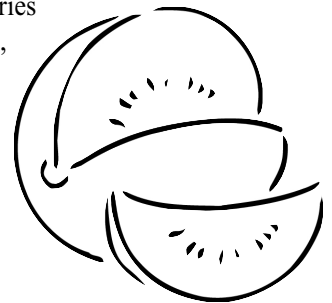
### Preparation:

Place shrimp, mango and green onions in a medium bowl. Whisk fish sauce, soy/tamari, lime juice, brown sugar and minced pepper. Pour over shrimp and mango mixture. Cover and refrigerate for 10 minutes.

Divide arugula between four salad plates or bowls. Top with one-fourth of the shrimp and mango. Garnish edge of salad plate with tomatoes.

- Serves 4

Per Serving: Calories 150, Calories from Fat 17, Total Fat 1.9g (sat 0.3g), Cholesterol 128mg, Sodium 637mg, Carbohydrate 13.8g, Fiber 2.4g, Protein 19.5g



## Let Sue Do It

*The repairman is coming, but you have a meeting?*

Let Sue do it.

*Kitty and Rover won't go to the kennel?*

Let Sue do it.

### Endless possibilities and reasonable pricing:

- pet sitting or house sitting
- mail and paper pickup (nominal charge)
- errands (bank, cleaners, pharmacy)
- grocery shopping (especially for home)



**Let Sue Do It**  
Oakridge area  
resident since 1988  
**Sue Hageland**  
972-530-5089

*Please visit*

**www.oakridgena.com**



**Official Web site of the  
Oakridge Neighborhood Association**

### Are you looking for . . .

- past *Oakridge News* articles?
- recipes?
- important local dates?
- health tips?
- Oakridge bylaws?
- other useful information?

**Oakridge Neighborhood Association**  
**P.O. Box 450145**  
**Garland, TX 75045-0145**

PSRT STD  
US POSTAGE  
PAID  
PERMIT #573  
GARLAND TX 75040

**upcoming events**

Sundays                   Nicholson Memorial  
                                  Library open, 2 to 6 p.m.  
August 9, 16       Daytimers Weekly Canasta  
August 27       Garland ISD school year begins  
September 3                   Labor Day



TX LIC # 6099



**COMMERCIAL**  
**RESIDENTIAL**

**WE SERVICE ALL TYPES OF SYSTEMS**  
**REPAIR • INSTALLATION • DESIGN**

**SPECIALIZING IN VALVE LOCATION, WIRING & CONTROLS**

**FREE ESTIMATES**  
**ON INSTALLATION**  
**ONLY**

**100% Financing**  
**Available**

**BACK FLOW**  
**TESTING**



**French Drains & Landscaping**

**972-303-0007**

**www.BillyJackSprinkler.com**

**214-460-2209 Mobile   Fax # (972) 303-4212**